

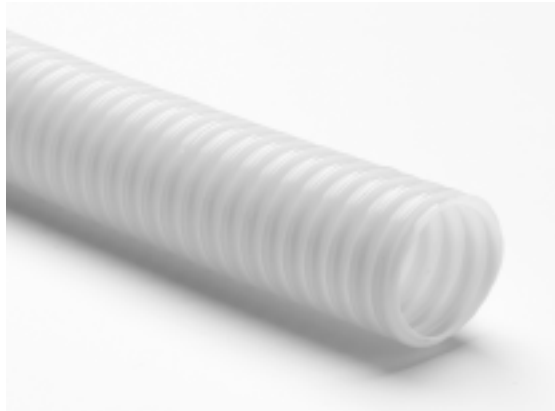
FIREJACKET® PLENUM

PLENUM RATED NONMETALLIC
CORRUGATED RACEWAY

Specialty Conduit

PREMISE CONDUIT

May 2009



FireJacket® / RW White Shell and
Natural Interior

Features & Benefits

- Available in white or orange for easy identification.
- Rugged corrugated design is flexible, light weight yet provides excellent crush resistance.
- Listed to UL Standards 910 and 2024, ideally suited for plenum and riser applications per NEC articles 770 and 800.
- Choose from 4 diameters, 1", 1-1/4", 1-1/2" and 2" to accommodate your specific fiber cable diameter.
- Sequential footage markings and product identification printed every two feet.
- Standard lengths range from 250' coils to 5000' reels.

GENERAL INFORMATION

FireJacket® is ideally suited for use as a nonmetallic flexible raceway for protecting optical fibers in accordance with NEC articles 770 and 800. It has been tested to meet two Underwriters Laboratory requirements, UL-910 and UL-2024.

Also available with Canadian — UL listing (cUL) meeting or exceeding the requirements for FT-6. Please request the Canadian UL listing at the time of quotation and note on the purchase order. This will assure the material is marked appropriately with the cUL designation.

FAST AND EFFICIENT INSTALLATION

The lightweight, flexible design makes it easy to install and maneuver around obstacles that may be encountered in areas requiring plenum. The corrugated wall provides excellent crush resistance for long-term protection while reducing surface contact between the inside wall of the conduit and the cable jacket, helping to lower cable installation friction. FireJacket® is available with 1000# tensile Bull-Line® pull tape pre-installed to help reduce cable installation costs. Other Bull-Line® pull strengths are available upon request.

MATERIAL PROPERTIES

Property Description	Test Method	Value
Smoke peak optical density	UL-2024, Sec. 8	0.05
Smoke average optical density	UL-2024, Sec. 8	0.01
Maximum Flame Spread (ft.)	UL-2024, Sec. 8	2.00
Vertical Burn	UL-94	V-0
Oxygen Index (%)	ASTM D 2863	63
Flame Rating	ASTM D 2863	S-E

Note: NM plenum raceway requires plenum rated cable to be used.

Note: Store indoors only.

STANDARD REEL & COIL LENGTHS

Non-standard lengths, special markings and assemblies and other Bull-Line® strengths can be made available upon request (minimum quantities may apply). Contact your A-D Technologies sales representative regarding your specific requirements.

Standard Reel Lengths	Size	Nom OD	Nom ID	Wt. Per 100-ft.	Footage	Reel F x W	Total Weight
CR 500 075 N633 1000	.750"	1.04"	.804"	10.0#	1,000'	36 x 30	250#
CR 500 100 N699 1000	1.00"	1.35"	1.11"	12.0#	1,000'	48 x 44	270#
CR 500 100 N699 2500	1.00"	1.35"	1.11"	12.0#	2,500'	56 x 44	580#
CR 500 100 N699 5000	1.00"	1.35"	1.11"	12.0#	5,000'	72 x 44	915#
CR 500 125 N699 1000	1.25"	1.60"	1.30"	13.5#	1,000'	48 x 44	285#
CR 500 125 N699 2500	1.25"	1.60"	1.30"	13.5#	2,500'	56 x 44	620#
CR 500 125 N699 5000	1.25"	1.60"	1.30"	13.5#	5,000'	72 x 44	990#
CR 500 150 N699 1000	1.50"	1.90"	1.55"	16.2#	1,000'	72 x 44	475#
CR 500 150 N699 2500	1.50"	1.90"	1.55"	16.2#	2,500'	78 x 44	730#
CR 500 200 N699 1000	2.00"	2.38"	2.10"	18.0#	1,000'	72 x 44	495#
CR 500 200 N699 1500	2.00"	2.38"	2.10"	18.0#	1,500'	78 x 44	595#
Standard Coil Lengths	Size	Nom OD	Nom ID	Wt. Per 100-ft.	Footage	Reel F x W	Total Weight
CR 500 100 N699 0250	1.00"	1.35"	1.11"	12.0#	250'	36 x 17	30#
CR 500 100 N699 0500	1.00"	1.35"	1.11"	12.0#	500'	39 x 21	60#
CR 500 125 N699 0250	1.25"	1.60"	1.30"	13.5#	250'	40 x 16	34#
CR 500 125 N699 0500	1.25"	1.60"	1.30"	13.5#	500'	40 x 25	68#
CR 500 150 N699 0250	1.50"	1.90"	1.55"	16.2#	250'	40 x 22	41#
CR 500 150 N699 0500	1.50"	1.90"	1.55"	16.2#	500'	40 x 22	82#
CR 500 200 N699 0250	2.00"	2.38"	2.10"	18.0#	250'	40 x 30	45#
CR 500 200 N699 0500	2.00"	2.38"	2.10"	18.0#	500'	45 x 40	90#

UL Listed Couplers & Terminal Adapters

Couplers



Plenum Rated

KPPC100	1.00" Plenum Rated Fits Nominal ODs 1.30"-1.35"	50/case
KPPC125	1.25" Plenum Rated Fits Nominal ODs 1.55"-1.64"	30/case
KPPC150	1.50" Plenum Rated Fits Nominal ODs 1.80"-1.90"	30/case
KPPC200	2.00" Plenum Rated Fits Nominal ODs 2.25"-2.38"	20/case

Terminal Adapters



Plenum Rated

KPTA100	1.00" Plenum Rated Fits Nominal ODs 1.30"-1.35"	50/case
KPTA125	1.25" Plenum Rated Fits Nominal ODs 1.55"-1.64"	30/case
KPTA150	1.50" Plenum Rated Fits Nominal ODs 1.80"-1.90"	30/case
KPTA200	2.00" Plenum Rated Fits Nominal ODs 2.25"-2.38"	20/case

NOTE: A-D Technologies has made every attempt to assure that the information contained in this product bulletin is accurate. The information supplied may change without notice. This information is intended to inform the reader of the typical characteristics of the pipe and accessories that are described and should not be considered complete with regard to design considerations. Contact a representative regarding any questions about this document and to determine if the information contained within is current.

ALL PROPRIETARY RIGHTS RESERVED